

M|P|W

Summer School

International Summer Schools in
Birmingham and Cambridge in 2022



www.mpw.ac.uk



Welcome to MPW

Welcome to Mander Portman Woodward (MPW), one of the UK's leading names in fifth and sixth-form education. Founded in 1973, our three colleges are strategically located in close proximity to leading universities in London, Birmingham and Cambridge.

We offer a distinctive alternative to traditional schools, with an approach defined by an outstanding level of individual support. Our classes are taught in small, Oxbridge-style groups, with a strong focus on exam preparation and extensive support throughout the university application process.

You can choose from a broad curriculum with A levels offered in over 40 subjects and prestigious university foundation programmes, including our new UAL endorsed Foundation Diploma in Art and Design. Consistently outstanding results mean that our students

progress to some of the best universities in the UK - over the past three years, two-thirds of UK university placements were at Russell Group, University of London or specialist universities.

A diverse, friendly community, with a majority of British students, provides an ideal learning environment for you to establish the vital language and cultural skills needed to succeed at university and beyond. Outside of the classroom, we offer a great range of accommodation, including a highly desirable full boarding option in the newly refurbished Queen's Gate House, London.



A levels, GCSE, University Foundation, Easter Revision



Maximum nine students in A level classes



Top grades in government inspection reports



70% UK and 30% international students



Supervised accommodation within walking distance of each college



Personal tutor system, supervising welfare and academic progress

Specialist preparation for:



Law



Medicine



Oxbridge



Economics



Art



Architecture



Engineering



MPW Summer School

The MPW Summer School offers international students the chance to experience the highest possible quality of intellectual insight and enrichment. Our expertly-designed programmes offer young people the opportunity to explore traditional academic subjects in refreshingly new ways, while also engaging in modern skills-based approaches to learning such as critical thinking and creative problem solving.

Central to our ethos is authenticity; our campuses are in city-centre locations where students will feel, experience and interact with Britain and British culture. Through a diverse schedule of local business tours, lectures given by world experts, overnight excursions to cities such as Bath and London, and cultural experiences such as theatre visits, we offer a genuinely unparalleled authentic cultural experience.

Furthermore, we have partnered with several prestigious organisations to offer unique and innovative approaches to programme design: with EtonX, we have developed a blended-learning programme of 21st-century skills; with InvestIn we combine our own summer programme with immersive career programmes based in London; and we have invited some of the world's leading academics from the University of Cambridge to give lectures especially to our students.

A summer with MPW is unique, unforgettable and transformative.

Key Dates

Course 1

Sunday 26 June 2022 to Saturday 9 July 2022

Course 2

Sunday 10 July 2022 to Saturday 23 July 2022

Course 3

Sunday 24 July to Saturday 6 August 2022

n.b. students can attend any combination of courses, so can enrol for 2, 4 or 6 weeks

Fees

- **Birmingham** - £3,100 per two-week course
- **Cambridge** - £3,500 per two-week course

How to get here

We offer complimentary airport transfers to all students from the UK's major airports to our colleges in Birmingham and Cambridge. The transfers include a member of the MPW team meeting the students when they arrive, transport to and from the airports and accommodation, and accompanying them to the departure gate at the end of the course.

Airport	Flight Time
Birmingham City Airport	20 mins
Manchester Airport	1hr 25 mins
East Midlands Airport	40 mins

Airport	Flight Time
Stansted Airport	45 mins
Luton Airport	1hr 10 mins
Heathrow Airport	1hr 30 mins
Gatwick Airport	1hr 45 mins

Birmingham

Introduction

Britain's second largest city, Birmingham is a vibrant, modern and diverse venue for a unique Summer School. This programme would suit students who are interested in learning a balanced range of academic subjects and skills while also engaging in an exciting, varied activities programme.

Key facts:

Age range: 13 - 15

Capacity: 59 students

Class size: Up to 8 students

Staff:student ratio: 1:10

Hours' tuition per week: 22.5

Academic Programme:

- Academic Lessons
- Life Skills Workshops
- Local Business Visits

Accommodation options:

- Single room, shared bathroom
- Single room, en suite bathroom

Certificate of completion



Academic Programme

The Academic Programme at MPW Birmingham is designed to provide students with a balanced blend of academic instruction and 21st-century skills. The programme is made up of morning academic lessons, afternoon Life Skills workshops, and weekly local business tours.

Our academic lessons have been specially planned and designed by full-time MPW teaching staff. Our aim is to showcase the best of British education through innovative, high-tech teaching and small class sizes. Students can choose from three academic streams, which both include four academic subjects (below).

Science Stream	Social Science Stream	Academic English
Physics Chemistry Biology Mathematics	Geography History Sociology Psychology	Essay Writing Seminars Lectures Report Writing

Local Business Tours | Wednesdays 09:00 - 12:30

Each week our groups visit local businesses to learn about how they operate and experience industry first-hand through guided tours, talks and demonstrations:

Tours	Description	Date
Jaguar car factory	Learn about the manufacturing processes for some of the most advanced vehicles in the world	29 June
Cadbury World	Find out how chocolate is made from the world's most well-known chocolate maker	6 July
JCB factory	See the engineering behind JCB's famous industrial vehicles	13 July
Alton Towers	Attend a talk to learn about how the Alton Towers resort develops marketing concepts to engage target markets.	20 July
World of Wedgwood	Experience a unique, interactive visitor experience celebrating the very best of British woodworking.	27 July
Land Rover	Learn about the robotics and welding necessary to create the iconic Land Rover cars.	3 August

* this is an indicative itinerary and may be amended

Life Skills

We have partnered with EtonX, a wholly owned subsidiary of Eton College, to deliver a UK exclusive programme as part of our 2022 Summer School.

The innovative Life Skills programme offers students the chance to develop an in-depth understanding of the life and careers skills needed to succeed in the 21st-century workplace.

The programme is delivered through a unique blended learning model. Each week students choose to study one of six modules (below), taught in class by MPW tutors.

After the Summer School ends, students then have 12 months access to online courses through EtonX, corresponding to the modules they attended with us.

Life Skills at Cambridge



Entrepreneurship



Public Speaking



Resilience



Making an Impact



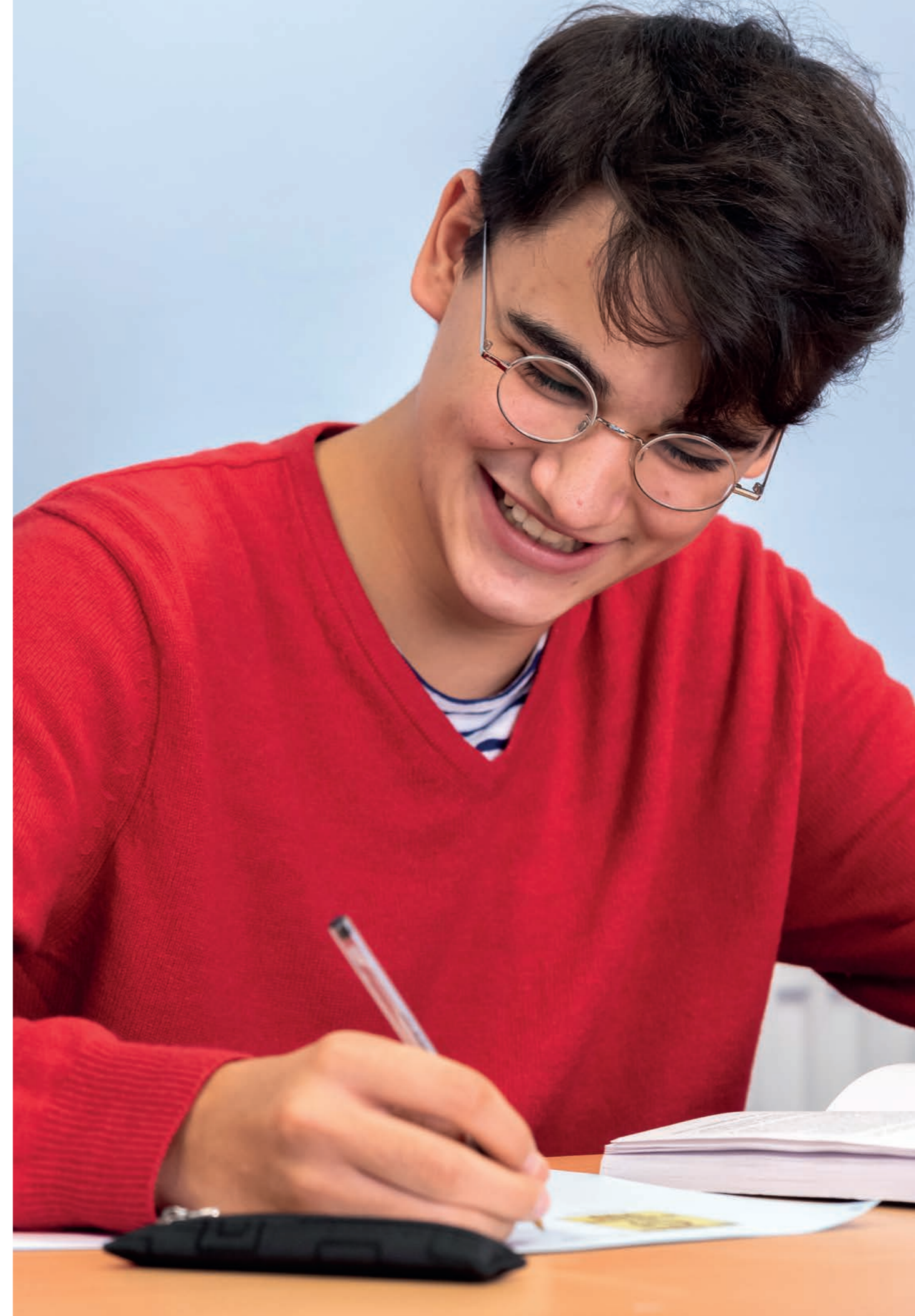
Creative Problem Solving



Critical Thinking

	Monday	Tuesday	Wednesday	Thursday	Friday
Academic Lessons 09:00 - 12:30	1x core academic subject, developed by MPW 3 hours per day (15 hours per week) Local businesses tours every Wednesday				
Life Skills 13:30 - 15:00	1x elective subject per week, developed by our partners at EtonX 2 hours per day (10 hours per week)				

22
Weekly
tuition
hours





Accommodation

Our high quality, industry-leading accommodation provides students with a comfortable home from home. Available as single rooms with optional en suite.

Students stay in modern, city-centre accommodation walking distance to the school. There are two residential areas:

Greenfield Crescent is situated directly next to MPW, and is a group of apartments spread across two buildings.

Edgbaston Studios is a purpose-built student accommodation block ten minutes' walk from the school.

House Parents live with the summer school students, ensuring that they are comfortable, safe and cared for.

All bedrooms have a double bed, wardrobe and writing desk. While students have shared living areas, they each have their own bedroom.

En suite bedrooms are available for an extra £200 per course.

Meals

Health and nutrition are important to us, so our caterers work hard to ensure that our meals are balanced and nutritious. We offer a mixture of British and international cuisine, and we are able to cater to all dietary needs and restrictions.

In the mornings a continental breakfast is served, including cereal, fruit, toast and croissants.

Lunch is either a cooked meal or a buffet of sandwiches.

Dinner is a cooked three-course meal.

Sample daily meal plan:

Breakfast

A selection of...



• Cereals



• Croissants



• Fruit



• Tea/coffee



• Toast

Lunch

A choice of...

- Baked potatoes with a choice of toppings
- Lasagne with garlic bread

Dinner

Three-course meal...

- Starter: Prawn ceviche
- Main: Coq au Vin
- Dessert: Crème Brûlée

Meals out in restaurants are a fantastic way to eat well and experience a city's culture. Each week and during the middle weekend we will accompany groups to local restaurants to sample authentic local cuisine.



Social & Leisure Activities

Birmingham is a lively city with lots of activities for young people. The social and leisure activities programme takes place after 15:00 on Mondays to Fridays, and involves visits to external venues such as bowling alleys as well as on site, whole-school activities such as karaoke.

Activities at local venues

- Go-karting
- Bowling
- High Ropes
- Archery
- Rock Climbing
- Ice-skating
- Escape Rooms

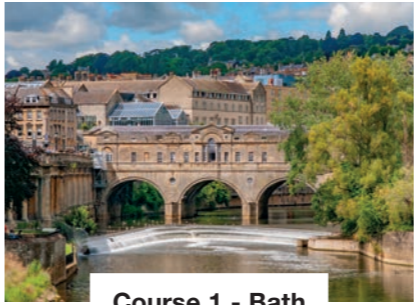
- Trampolining
- Shooting
- Crazy Golf
- Theatre
- Meals at Restaurants
- Cinema

Activities at our Edgbaston Studios Residence

- Movie Nights
- Karaoke
- Disco

Overnight Excursions

We want our students to experience as much of Britain as possible, so during the middle-weekend of each course we will take all our students on two-night overnight excursions to other cities:



Course 1 - Bath
1 - 3 July

One of Britain's most beautiful and photogenic cities, Bath is a historic and culturally-rich destination with much to offer visitors including its famous Roman Baths.



Course 2 - London
15 - 17 July

The UK's iconic capital is one of the most famous cities in the world; we will stay in the city centre and visit famous attractions such as the London Eye and Tower of London.



Course 3 - York
29 - 31 July

York is a cultural marvel, with atmospheric cobbled alleys, world-class museums, inspiring art galleries – and the country's longest circuit of medieval city walls.

The trips will include accommodation in either a youth hostel or university campus, guided tours, a meal out and free time for shopping.

Cambridge

Introduction

Cambridge is known globally for its stunning architecture and world-leading university, and is the perfect summer school venue for academically-focused students. Cambridge would appeal to students who would like to study a specific discipline in a renowned international centre for learning.

Key facts:

Age range: 15 - 17

Capacity: 70 students

Class size: Up to 8 students

Staff:student ratio: 1:10

Hours' tuition per week: 25

Academic Programme:

- Academic Lessons
- Life Skills Workshops
- Lecture Programme

Accommodation options:

- Single room, shared bathroom
- Single room, en suite bathroom

Certificate of completion



Academic

The Academic Programme at MPW Cambridge is designed to provide students with a focused programme of academic insight and enrichment with practical skills-based workshops. It is made up of morning academic lessons, afternoon Life Skills workshops, and weekly lectures.

Academic Lessons

Our academic lessons have been specially planned and designed by full-time MPW teaching staff. Our aim is to showcase the best of British education through innovative, high-tech teaching and small class sizes. Students can choose from seven academic subjects (right).

IELTS

Students who opt for the IELTS course can sit an examination at the end of the course for an additional fee of £250. MPW will arrange the enrolment and transport and accompany the students to the examination venue.

n.b. The IELTS examination takes place on the final Saturday of each course, meaning that students may need to return home on the Sunday instead of the Saturday. The airport transfer is included in the examination fee.

AM Academic subjects



Art & Design



Business & Economics



Finance and Economics



Law



Medicine



Maths



International Relations and Politics



IELTS

	Monday	Tuesday	Wednesday	Thursday	Friday
Academic Lessons 09:00 - 12:30			1x core academic subject, developed by MPW 3 hours per day (15 hours per week) Local businesses tours every Wednesday		
Life Skills 13:30 - 15:00			1x elective subject per week, developed by our partners at EtonX 2 hours per day (10 hours per week)		

25
Weekly tuition hours



Life Skills

We have partnered with EtonX, a wholly owned subsidiary of Eton College, to deliver a UK exclusive programme as part of our 2022 Summer School.

The innovative Life Skills programme offers students the chance to develop an in-depth understanding of the life and careers skills needed to succeed in the 21st-century workplace.

The programme is delivered through a unique blended learning model. Each week students choose to study one of six modules (below), taught in class by MPW tutors.

After the Summer School ends, students then have 12 months access to online courses through EtonX, corresponding to the modules they attended with us.

Life Skills at Cambridge



Entrepreneurship



Public Speaking



Resilience



Making an Impact



Creative Problem Solving



Critical Thinking

Weekly Lectures

Wednesdays 10:00 - 11:30

Cambridge is home to some of the world's leading experts in all academic fields. Our Summer Lectures Programme aims to enrich and inspire by providing our students with the opportunity to listen to academics from the University of Cambridge speak about their research. Each week our students will visit the world-renowned Cambridge Union Society Debating Chamber to attend lectures and Q&A sessions; these talks are exclusively for MPW students:



Dr Stuart Hogarth

Industrialisation | 29 June

Britain's industrial revolution is considered by many to be one of the most significant events in world history but its causes, character and effects are hugely contested. This lecture will explore some of the myths that surround our understanding of the relationship between technological change and economic development and will pay particular attention to the role of the state in the process of industrialisation. It will begin by examining industrialisation in the UK and USA and then turn to industrialisation in Asia.

Dr Hogarth is a Lecturer in Sociology of Science and Technology.

The simple mathematics of flight | 6 July

Anything that flies, from insects to birds to jumbo jets, manages to defy Newton's gravity with a good enough mastery of the flow of air (aerodynamics) around a pair of wings. Dr Lefaue will explain the fascinating mathematics behind their various flight strategies, to give you a new, more mathematical, appreciation for the marvels of bird migration and transpacific flights.

Dr Lefaue is a Leverhulme Trust Early Career Fellow in the Department of Applied Mathematics and Theoretical Physics.



Dr Adrien Lefaue



Dr Lorna Ayton

1: The Mathematics of Waves | 13 July

Waves arise in the physical world all around us: movements in the ocean, sound, light, and even a beating heart can all be described mathematically by wave equations. This lecture, delivered by Dr Lorna Ayton, will present the mathematics needed to model waves and predict how fast and far they can travel.

Dr Lorna Ayton is an EPSRC Early Career Research Fellow in the Waves group.

2: The Mathematics of Climate Change | 13 July

To understand how our climate is changing, we need a mathematical description of the processes in the atmosphere and in the ocean. In this lecture, Dr Alison Ming will introduce the basic thermodynamics of the greenhouse effect and give an overview of the equations that govern the flow of fluid on our rotating planet.

Dr Alison Ming is a Leverhulme Trust Early Career Fellow in the Atmosphere-Ocean dynamics group.



Dr Alison Ming



Dr Michelle Westerlaken

Imagining Multispecies Worlds | 20 July

Traditionally, the field of design is established by humans, with the goal to develop artefacts and interactions for humans. Nowadays, however, most designers also learn that their practice has a large impact on the environment and that it is always politically charged. In this lecture, Dr. Michelle Westerlaken will focus on what it means to design for – and with – animals as a turn towards more sustainable and multispecies futures.

Dr Michelle Westerlaken is a Research Associate on the Smart Forests project.

Cancel culture and the limits of free speech | 27 July

Liberal democracies pride themselves on promoting open debate, but do our institutions, such as universities and public broadcasters, still adhere to this principle? And did they really do so in the past? Have we become less tolerant of the views of others? Should there be limits to what can be said? If so, what are they? Professor Patrick Baert will explore these questions and more in his lecture.

Patrick Baert is a Professor of Social Theory at the University of Cambridge.



Professor Patrick Baert

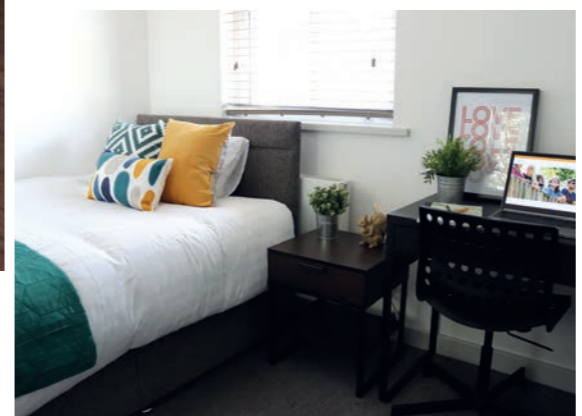


Dr Shannon Philip

Race and Gender in a Global Context | 3 August

In this lecture we will critically explore the ideas of 'gender' and 'race' in the Global South. The lecture sociologically focuses on the social construction of gender identities and racial groups and reflects on how these come to shape lives and identities in Asia and Sub-Saharan Africa. We explore the impact of colonialism on gender and race relations, as well as new decolonial ways of thinking about societies and lives in the Global South in relation to the Global North.

Dr Shannon Philip is a sociologist working at the Department of Sociology, University of Cambridge.



Accommodation

Our high quality, industry-leading accommodation provides students with a comfortable home from home. Available as single rooms with optional en suite.

Students stay in modern, city-centre accommodation walking distance to the school. We will provide transport to and from the accommodation at the beginning and end of each day for those who do not want to walk. There are two residential areas:

Malta Road is a terrace of five houses, each with gardens, kitchens and living rooms. It is close to the lively and vibrant Mill Road.

Tripos Court is a purpose-built gated community for students, which is close to Cambridge Leisure Park.

House Parents live with the summer school students, ensuring that they are comfortable, safe and cared for.

All bedrooms have a double bed, wardrobe and writing desk. While students have shared living areas, they each have their own bedroom.

En suite bedrooms are available for an extra £200 per course.

Meals

Health and nutrition are important to us, so our caterers work hard to ensure that our meals are balanced and nutritious. We offer a mixture of British and international cuisine, and we are able to cater to all dietary needs and restrictions.

In the mornings a continental breakfast is served, including cereal, fruit, toast and croissants.





Lunch is either a cooked meal or a buffet of sandwiches.

Dinner is a cooked three-course meal.

Sample daily meal plan:

Breakfast

A selection of...

-  • Cereals
-  • Fruit
-  • Toast
-  • Croissants
-  • Tea/coffee

Lunch

A choice of...

- Baked potatoes with a choice of toppings
- Lasagne with garlic bread

Dinner

Three-course meal...

- Starter: Prawn ceviche
- Main: Coq au Vin
- Dessert: Crème Brûlée

Meals out in restaurants are a fantastic way to eat well and experience a city's culture. Each week and during the middle weekend we will accompany groups to local restaurants to sample authentic local cuisine.

Social & Leisure Activities

Cambridge is a thriving student city with plenty to see and do. A compact, walkable city, there are activities to satisfy every interest: whether it's punting down the Cam, taking in a film, wandering through historic streets, exploring museums or enjoying a meal out.

Activities at local venues

- Bowling
- High Ropes
- Punting
- Escape Rooms
- Ice-skating
- Rock Climbing
- Theatre
- Meals at Restaurants
- Cinema

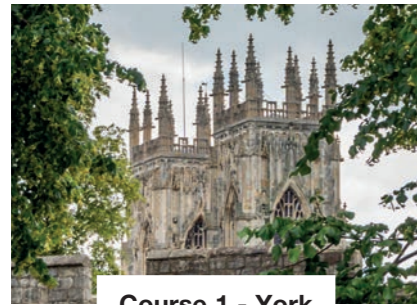
Activities at our Panton Street marquee

- Movie Nights
- Karaoke
- Disco



Overnight Excursions

We want our students to experience as much of Britain as possible, so during the middle-weekend of each course we will take all our students on two-night overnight excursions to other cities:



Course 1 - York
1 - 3 July

York is a cultural marvel, with atmospheric cobbled alleys, world-class museums, inspiring art galleries – and the country's longest circuit of medieval city walls.



Course 2 - Bath
15 - 17 July

One of Britain's most beautiful and photogenic cities, Bath is a historic and culturally-rich destination with much to offer visitors including its famous Roman Baths.



Course 3 - London
29 - 31 July

The UK's iconic capital is one of the most famous cities in the world; we will stay in the city centre and visit famous attractions such as the London Eye and Tower of London.

The trips will include accommodation in either a youth hostel or university campus, guided tours, a meal out and free time for shopping.



InvestIn Extension

We have teamed up with our partners at InvestIn to create a unique combined programme of MPW summer school courses and InvestIn Summer Experiences. Students can study a two-week course summer course with MPW then transfer directly to InvestIn in London to complete a 5, 10 or 15-day careers programme. MPW will arrange transfers and enrolments.

InvestIn is a UK-based organisation which provides students with immersive experiences in careers of their choice. Industry-leading professionals design every one of the experiences, guiding students through authentic career simulations, interactive activities, inspiring site visits, personalised career guidance and 1:1 networking opportunities.

MPW Course 1



InvestIn Experience

Ages: 15 - 18

**Sunday 26 June 2022
to Friday 8 July 2022**

- Young Investment Banker
- Young Doctor
- Young Engineer
- Young Lawyer
- Young Psychologist
- 5, 10 or 15-day options available

MPW Course 2



InvestIn Experience

Ages: 15 - 18

**Sunday 10 July 2022
to Friday 22 July 2022**

- Young Accountant
- Young Architect
- Young Artist
- Young Cyber Security
- Young Data Scientist
- Young Dentist
- Young Engineer
- Young Entrepreneur
- Young Environmentalist
- Young Fashion Designer
- Young Filmmaker
- Young Forensic Scientist
- Young International Development Expert
- Young Investment Banker
- Young Journalist
- Young Lawyer
- Young Management Consultant
- Young Marketing Manager
- Young Doctor
- Young Music Producer
- Young Nurse
- Young Political Leader
- Young Psychologist
- Young Software Engineer
- Young Sports Pro
- Young Vet
- Young Video Game Designer
- Young Writer

MPW Course 3



InvestIn Experience

Ages: 12 - 14

**Sunday 24 July 2022
to Friday 5 August 2022**

- Future Investment Banker
- Future Computer Scientist
- Future Doctor
- Future Engineer
- Future Lawyer
- Future Psychologist
- Future Vet
- Future Architect

n.b. Students who choose the MPW + InvestIn package finish their course with MPW on the final Friday instead of Saturday

InvestIn Prices: 5 days: £1,950 | 10 days: £3,950 | 15 days: £5,850

Parents pay a combined fee for both MPW and InvestIn summer programmes



M | P | W

MPW

90-92 Queen's Gate
London SW7 5AB

summerschool@mpw.ac.uk

www.mpw.ac.uk
